

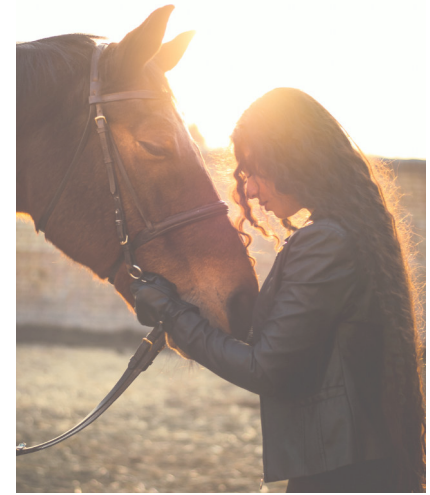


**minerve**  
EQUIPEMENT VÉTÉRINAIRE

## ALPHA 400 MKII



MAKE ANESTHESIA  
SIMPLE & INTUITIVE



Our company was established under the name **MINERVE Medical in 1953**, and since then it has stuck to its original vocation of designing, manufacturing and distributing **medical equipment**.

In 1993 its veterinary medical equipment branch was sold to a group employee.

The company continues to focus on the **design** and **manufacture** of medical equipment for veterinary use.

Its **anaesthesia-resuscitation unit**, **wich targets the medical research sector**, is experiencing increased demand leading to the introduction of high value-added **innovative products**.







# RESPIRATOR ALPHA 400 MKII

Ref: 2020001

The Alpha 400 MK2 respirator is a forced or assisted ventilation device, intended for veterinary applications in large species, up to 1200 kg. It combines the flexibility of pneumatic propulsion with the precision of digital control, while eliminating the need for a bulky, noisy and expensive external compressor..

The **aeraulic circuit** has been **designed** to **minimize resistance** and **dead volume**, while **facilitating access** and **cleaning operations**. The **touch interface** presents the **essential parameters** in a **simple** and **readable way**, and **provides ease of use**, by **assistance** with **parameterization** and the **memorization** of **patient profiles**. The **spirometric approach** allows **fine control of respiratory parameters**. **Gas monitoring** can be **integrated directly** into the **interface**, with **curve** and **associated alerts**.



**AVAILABLE OPTION :** Monitoring ECG, RESP, TEMP, NIBP, IBP +

Touch screen 15"

Emergency manual control panel

2L balloon for emergency manual ventilation

-Accessory shelf  
-Large capacity lime bin

-O2 and Air flowmeters 0-15L/Min  
- Double SELECTATEC ramp allowing to receive 2 evaporators

Adjustable breathing circuit volume from 5 to 40L

**PATIENT CIRCUIT :**  
D35 mm Ref: 2020015  
D22 mm Ref: 2020144

## OPTION GAZEOUS INTEGRATED MONITORING :

2020140 : Capnography

2020141 : Multigaz Co2 + anesthésic Agents

2020142 : Multigaz Co2 + O2 + anesthésic Agents

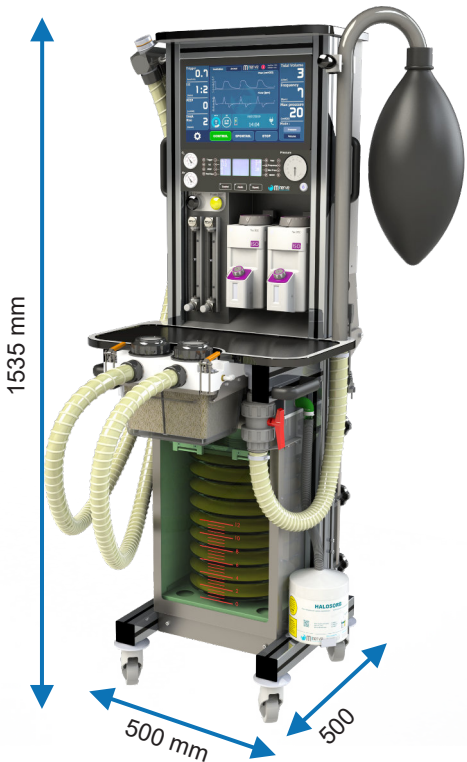


## HMI (Human Machine Interface) :

- Traceability of patient parameters (Name, age, comments, Log of anesthesia parameters...)
- Management of patient profiles (respiratory parameters, pathology, Comments etc.)
- Measurement and display of spirometry in real time
- Integration of capnography (Co2, o2, Halogens, etc.)
- Automatic fresh gas supply management

## TECHNICAL DATA

Power Supply	110-240 V
Funtionement modes	Anaesthesia - Ressucitation
Débitmètres	Standard 1 x 0-15l/min (air) 1 x 0-15l/min (o2)
Inlet pressure (air + o2)	1- 4 bars
Tidal volume	300-12000 ml
Respiratory rate	2 - 30 /min
Rapport I/E	1:6 à 3:1
Trigger différential pressure	-1 à -20 mb
Trigger flow	3 à 200 lpm
Recruitment functions	Manual or automatic
Inlet pressure gauge O2 + Air (Bars)	0-10
SELECTEC ramp	Oui X2
Lime tank capacity (Kg)	5
PEEP Setting	Automatic / Manual by valve
Balloon (l)	2
Patient circuit diameter (mm)	35 - 40
Activated carbon cartridges	MINERVE HALOSORB 1.2 Kgs
Dimensions (mm)	500 x 500 x 1535
Weight (Kgs)	85
Built-in battery	Yes (capacity + than 3 heures)



# SIMPLE & LONG LASTING SOLUTION

A collaborative approach to help with your projects... As simple as that !



Z.I Rue de l'Aube - 51310 ESTERNAY

Tel. +33 (0)3 26 42 50 15 - Fax. +33 (0)3 26 42 50 16

Email : [contact@minerve.eu](mailto:contact@minerve.eu)



[www.minerve.eu](http://www.minerve.eu)

Équipement vétérinaire MINERVE SA - RCS REIMS 324755545